

Fixed Displacement Vane Pump

HV and HVQ Series



Features

- HV / HVQ Series are fixed displacement and balanced type vane pumps. Available in both 12 vanes design for industrial application with quiet operating and 10 vanes design for mobile application with higher pressure and wider range of speed.
- The vane design with self compensation for wear and clearances makes volumetric efficiency of pump nearly constant over the service life. (the vane always adjust its orbit to contact with the cam ring, even though wear occurs between the cam ring and vane tip)
- With a balanced intra-vane design, outlet pressure is continuously applied only to the area between the vane and insert. This area is small and thrust is correspondingly light. Top and bottom areas of the vane are subject to either inlet or outlet pressure, depending on the vane's location during rotor rotation. The valving of pressure to and from the bottom area of the vane is through holes drilled in the rotor. This varying pressure under the vane reduces wear and increases pump efficiency.
- The vane pump is not damaged at low speed and high pressure operation because pumping action does not start until the speed is high enough for the vane to throw out.



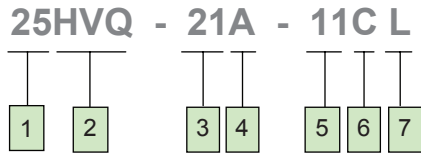
- The inlet or outlet ports can be rotated through increments of 90° in relation to each other, providing application flexibility and easy installation.
- With the cartridge independent of the shaft, allowing for easy change of flow capacity and field servicing without removing the pump from its mounting.
- For the cartridge kit of HVQ Series, the flexible plates are inserted between the support plates and the rotor. The flexible plates are assembled with the bronze facing towards the rotor to improve cold start capability and compensate thermal expansion in the rotor. This makes HVQ Series particularly suited for mobile application.

Handling

- For maximum service life, the pump should be protected from contamination. Filtering fluid before filling and during operation to maintain or exceed ISO cleanliness code 16/13. Appropriately size suction filter, with cold start bypass, of 149 micron absolute (100 mesh) and 10 micron absolute return line filter is recommended. Replaceable elements should be changed as filter supplier instructions
- The drive shaft must align with the power source shaft. Avoiding shaft end thrust and applications that impose radial loading.
- The start-up procedures should be as follows:
 - Check the rotation of power source to match with rotation of pump.

- Check inlet and outlet ports to assure all connections are properly installed and check all mounting bolts and flanges to assure all are tight and properly aligned.
- Fill pump with fluid through the outlet port if the pump is mounted above the fluid level. The spline shaft models also need to be lubricate with an anti-fretting grease or similar lubricant.
- Place all controls in the neutral position so the pump is unloaded during initial start-up.
- Prime the pump within a few second when the pump is started.
- Bleed off entrapped air from outlet circuit until a steady output flow is observed.

The products described herein, including without limitation, product features, specifications, designs, availability and pricing, are subject to change at any time without notice.



1 Model
20, 25, 35, 45

2 Series
HV - Industrial
HVQ - Mobile

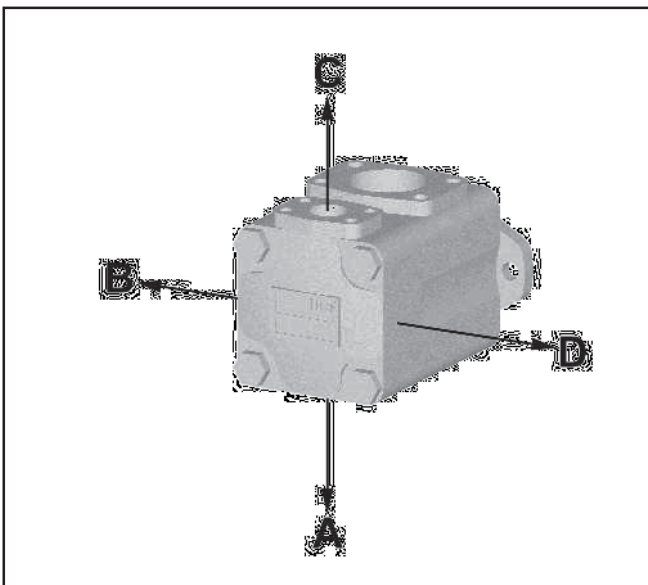
3 Ring Size (USgpm)
20HV/HVQ - 2, 5, 8, 9, 11, 12, 14
25HV/HVQ - 12, 14, 17, 19, 21
35HV/HVQ - 21, 25, 30, 35, 38
45HV/HVQ - 42, 47, 50, 57, 60

4 Port Connection
A - SAE 4-bolt with Inch threads
AM - SAE 4-bolt with Metric threads

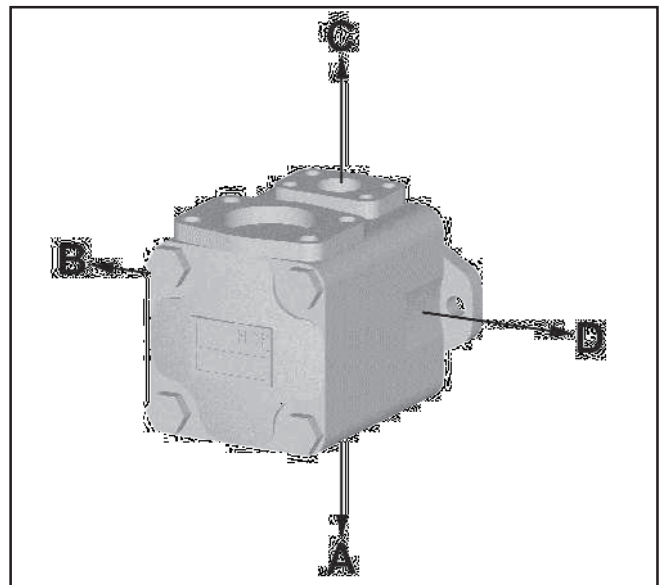
5 Shaft
1 - Straight keyed
11 - Splined (25, 35, 45HV/HVQ)
86 - Heavy duty straight keyed (25, 35, 45HV/HVQ)
151 - Splined (20HV/HVQ only)

6 Outlet Port position
(Viewed from cover end)
A - Opposite inlet
B - 90° CCW from inlet
C - Inline with inlet
D - 90° CW from inlet

7 Shaft Rotation
(Viewed from shaft end)
R - Turn right
L - Turn left



Port Positions for 20HV/HVQ



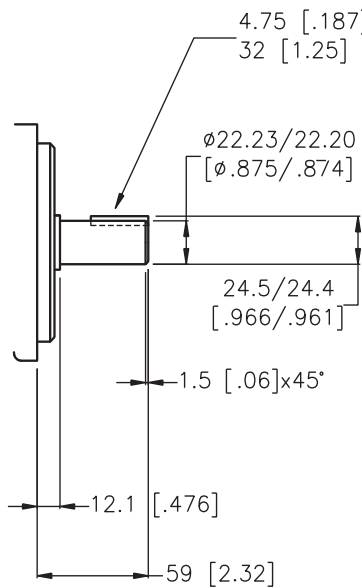
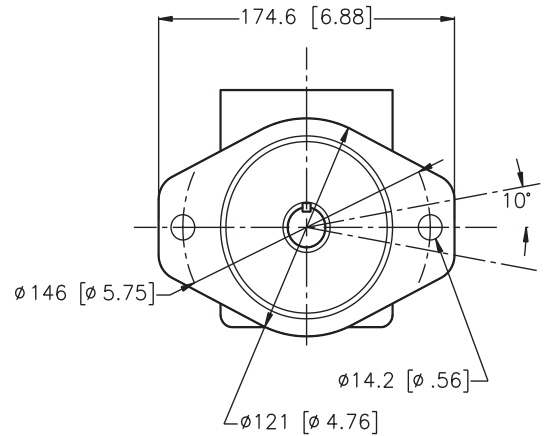
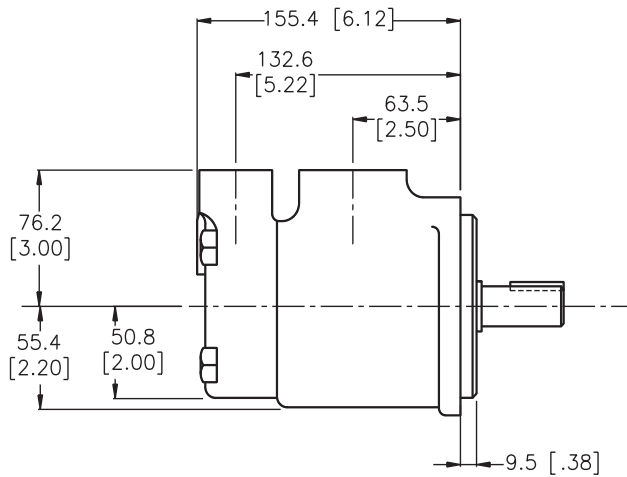
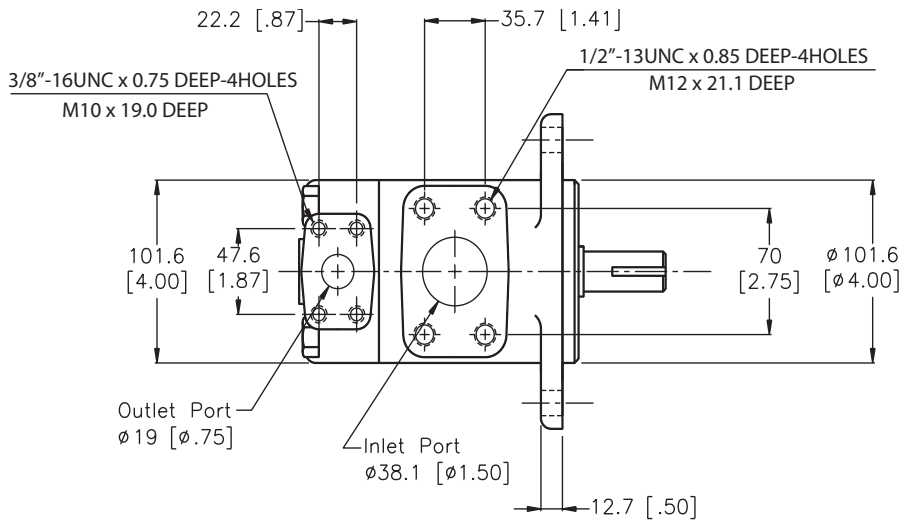
Port Positions for 25HV/HVQ, 35HV/HVQ
45HV/HVQ

Specifications
Single Pump HV Series

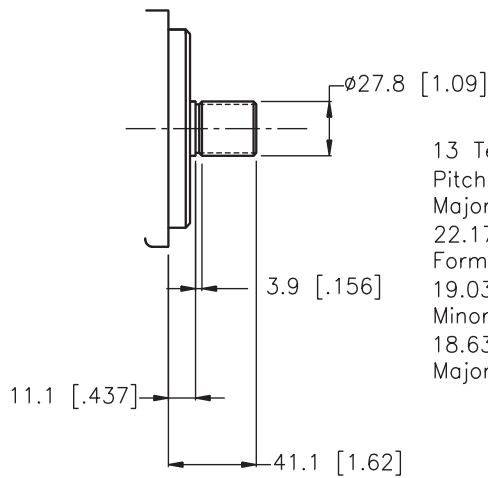
Model	Delivery at 1200 rpm & 7 bar (100 psi)	Displacement cm ³ /r (in ³ /r)	Maximum Speed rpm	Maximum Pressure bar (psi)	Typical Delivery at max speed & pressure L/min (USgpm)	Typical Input Power at max speed & pressure kW (hp)	Weight kg (lb)
	USgpm						
20HV	2	7.0 (0.42)	1800	206 (3000)	11.3 (3.0)	5.2 (7.0)	11.8 (26)
	5	18 (1.10)		206 (3000)	28.4 (7.5)	11.2 (15.0)	
	8	27 (1.67)		206 (3000)	45.4 (12.0)	17.0 (22.8)	
	9	30.2 (1.84)		206 (3000)	51.0 (13.5)	23.5 (31.5)	
	11	36 (2.22)		206 (3000)	56.8 (15.0)	22.6 (30.3)	
	12	40 (2.47)		158 (2300)	62.1 (16.4)	25.1 (33.7)	
	14	45 (2.78)		138 (2000)	69.6 (18.4)	28.3 (37.9)	
25HV	12	39 (2.47)	1800	172 (2500)	62.1 (16.4)	22.9 (30.8)	14.5 (32)
	14	45 (2.78)			69.6 (18.4)	25.7 (34.5)	
	17	55 (3.39)			86.3 (22.8)	29.8 (40.0)	
	19	60.8 (3.72)			96.1 (25.4)	32.5 (43.5)	
	21	67 (4.13)			106.0 (28.0)	34.0 (45.6)	
35HV	21	68.3 (4.18)	1800	172 (2500)	106.3 (28.1)	34.0 (45.5)	22.7 (50)
	25	81 (4.94)			124.9 (33.0)	45.5 (61.0)	
	30	97 (5.91)			154.4 (40.8)	54.5 (73.0)	
	35	112 (6.83)			181.7 (48.0)	61.5 (82.4)	
	38	121 (7.37)			193.8 (51.2)	65.9 (88.3)	
45HV	42	138 (8.41)	1800	172 (2500)	208.2 (55.0)	75.3 (101.0)	34.0 (75)
	47	151.4 (9.26)			244.1 (64.5)	82.5 (110.6)	
	50	162 (9.85)			253.6 (67.0)	87.3 (117.0)	
	57	183.6 (11.23)			295.0 (77.8)	94.0 (126.0)	
	60	193 (11.75)			310.4 (82.0)	103.7 (139.0)	

Specifications
Single Pump HVQ Series

Model	Delivery at 1200 rpm & 7 bar (100 psi)	Displacement cm ³ /r (in ³ /r)	Maximum Speed rpm	Maximum Pressure bar (psi)	Typical Delivery at max speed & pressure L/min (USgpm)	Typical Input Power at max speed & pressure kW (hp)	Weight kg (lb)
	USgpm						
20HVQ	2	7.0 (0.42)	2700	206 (3000)	15.9 (4.2)	7.3 (9.8)	11.8 (26)
	5	18 (1.10)		206 (3000)	41.6 (11.0)	17.9 (24.0)	
	8	27 (1.67)		206 (3000)	64.3 (17.0)	26.1 (35.0)	
	9	30.2 (1.84)		206 (3000)	71.5 (18.9)	32.9 (44.1)	
	11	36 (2.22)		206 (3000)	87.1 (23.0)	35.4 (47.5)	
	12	39 (2.41)		158 (2300)	96.5 (25.5)	28.3 (38.0)	
	14	45 (2.80)		138 (2000)	113.6 (30.0)	29.1 (39.0)	
25HVQ	12	40 (2.45)	2700	206 (3000)	87.1 (23.0)	41.0 (55.0)	14.5 (32)
	14	45 (2.77)	2700		102.2 (27.0)	46.6 (62.5)	
	17	55 (3.37)	2500		117.3 (31.0)	51.8 (69.5)	
	19	60.8 (3.72)	2500		133.5 (34.5)	53.0 (71.0)	
	21	67 (4.12)	2500		143.8 (38.0)	61.9 (83.0)	
35HVQ	21	68.3 (4.18)	2500	206 (3000)	143.8 (38.0)	55.0 (73.9)	22.7 (50)
	25	81 (4.98)	2500		170.3 (45.0)	75.3 (101.0)	
	30	97 (5.96)	2500		208.2 (55.0)	87.7 (117.5)	
	35	112 (6.88)	2400		227.1 (60.0)	98.5 (132.0)	
	38	121 (7.42)	2400		246.0 (65.0)	104.4 (140.0)	
45HVQ	42	138 (8.41)	2200	172 (2500)	251.7 (66.5)	91.4 (122.5)	34.0 (75)
	47	151.4 (9.26)			280.8 (74.20)	95.0 (127.3)	
	50	162 (9.90)			299.0 (79.0)	105.2 (141.0)	
	57	183.6 (11.23)			342.5 (90.50)	109.3 (146.6)	
	60	193 (11.80)			363.4 (96.0)	126.8 (170.0)	

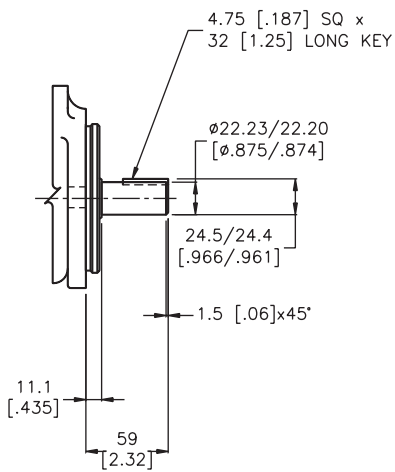
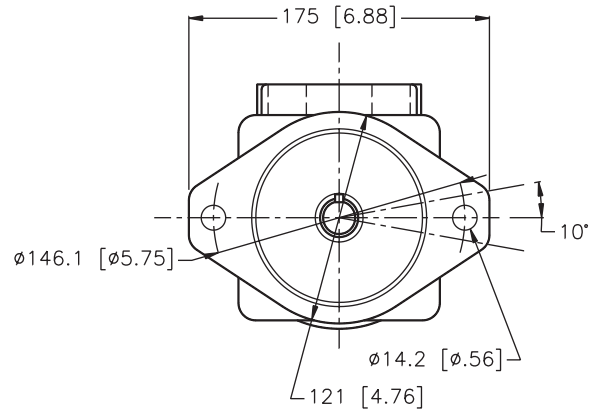
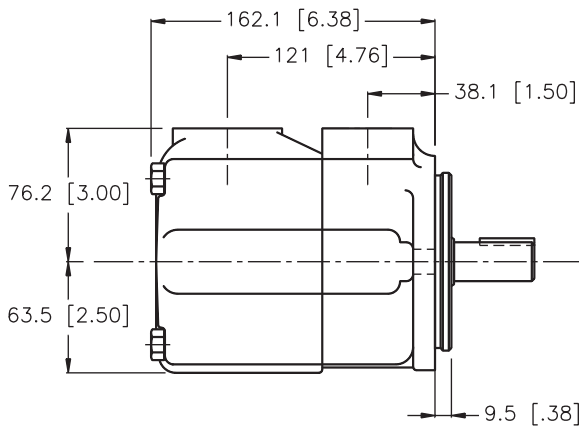
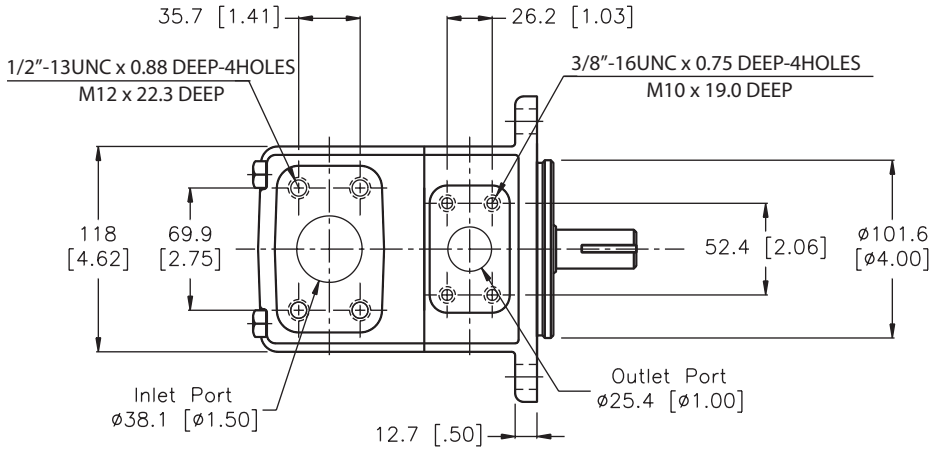


Shaft 1
Keyed Shaft

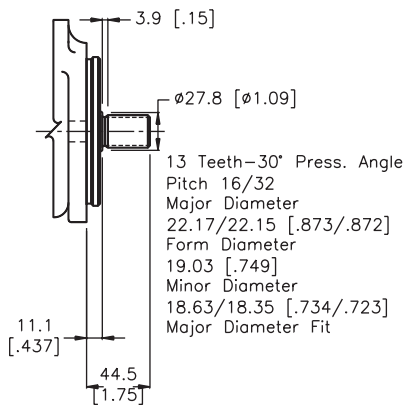


Shaft 151
Splined Shaft

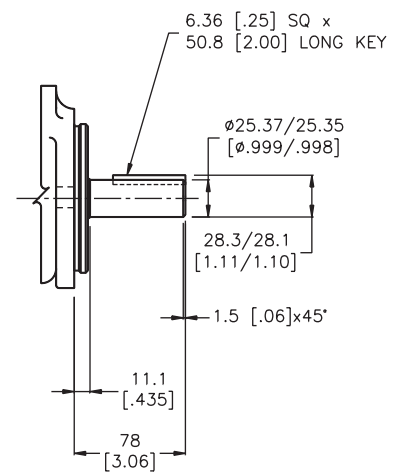
13 Teeth - 30° Press. Angle
Pitch 16/32
Major Diameter
22.17/22.15 [.873/.872]
Form Diameter
19.03 [.749]
Minor Diameter
18.63/18.35 [.734/.723]
Major Diameter Fit



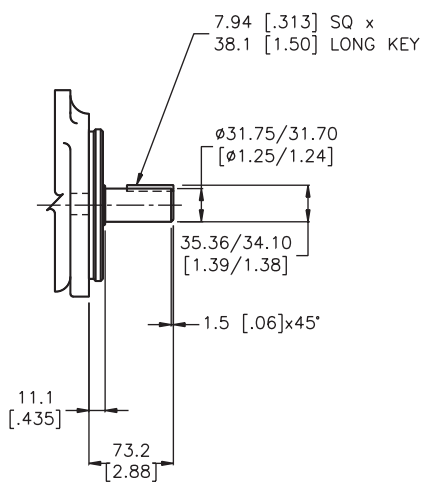
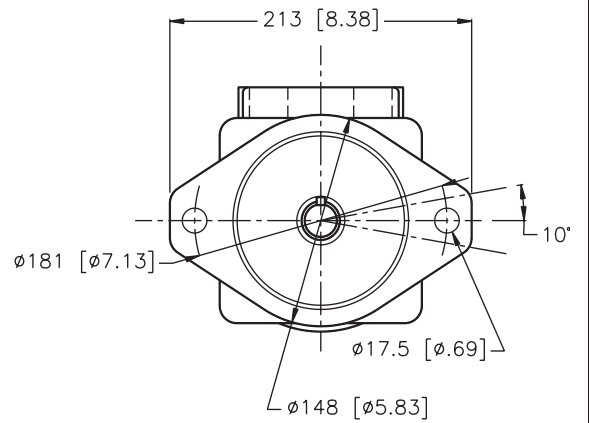
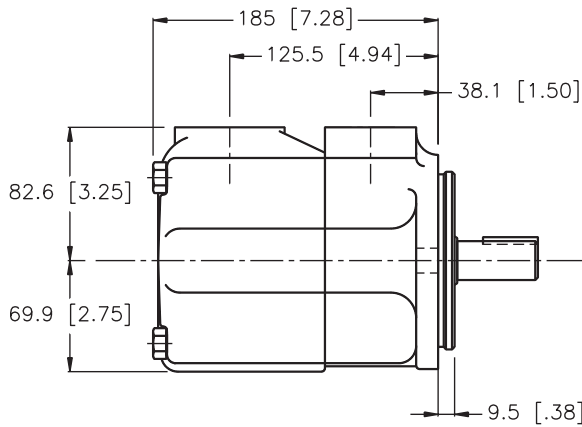
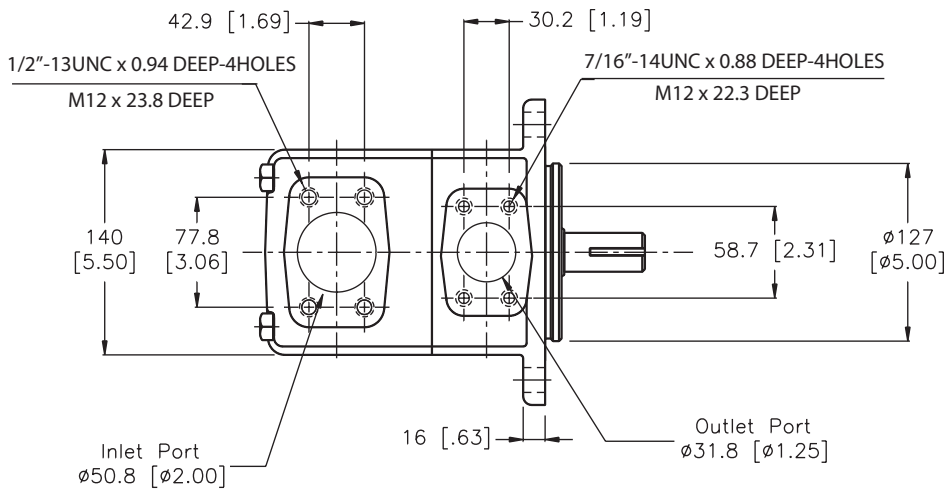
Shaft 1
Keyed Shaft



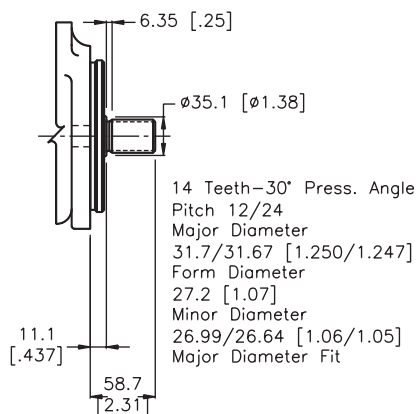
Shaft 11
Splined Shaft



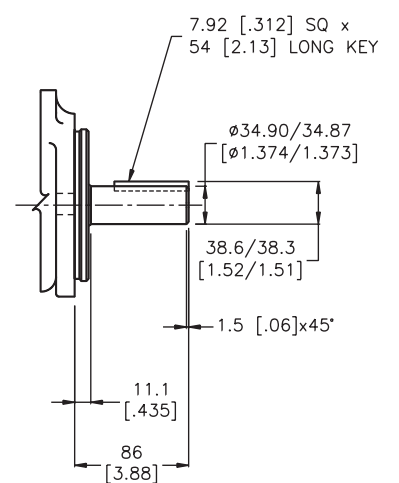
Shaft 86
Heavy Duty Keyed Shaft



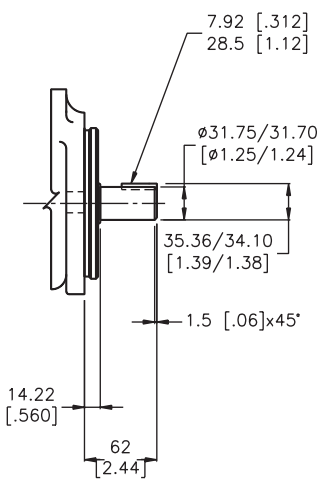
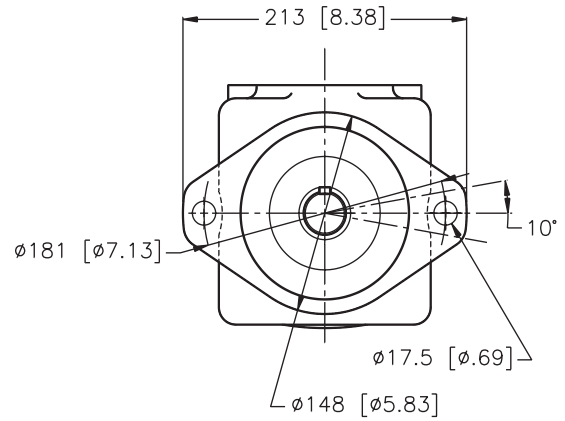
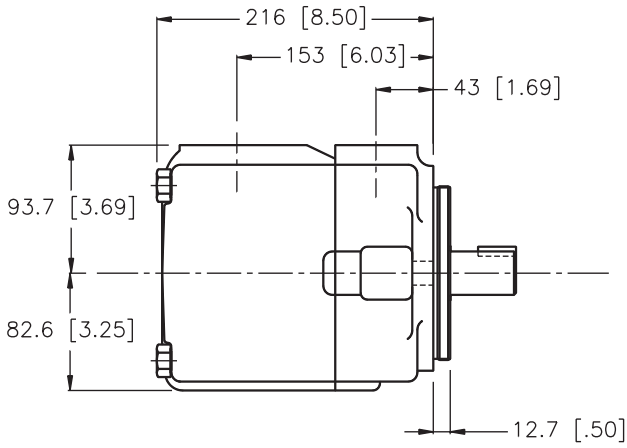
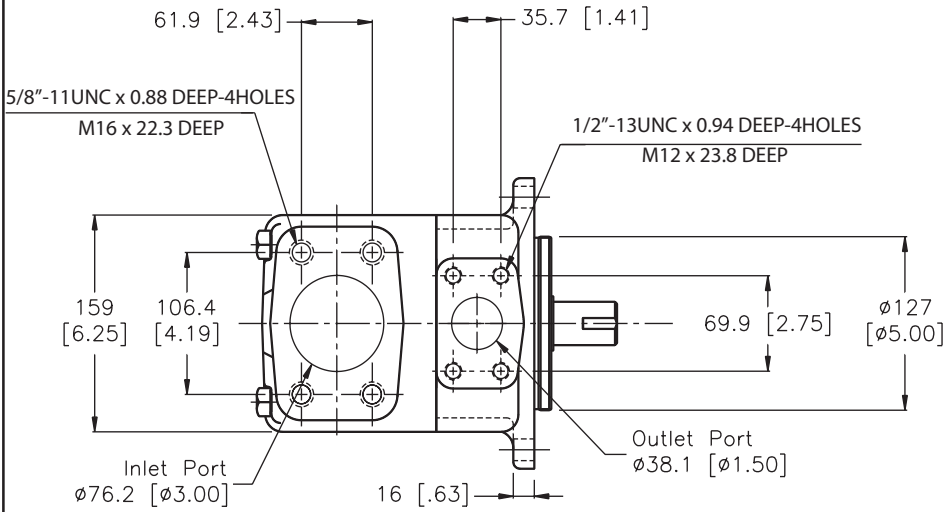
Shaft 1
Keyed Shaft



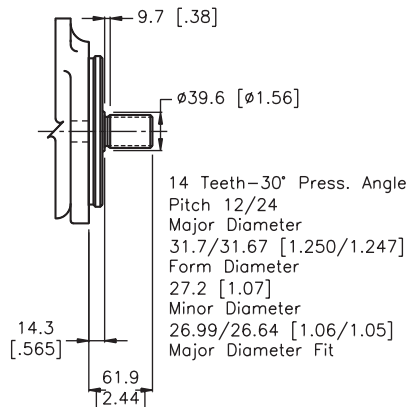
Shaft 11
Splined Shaft



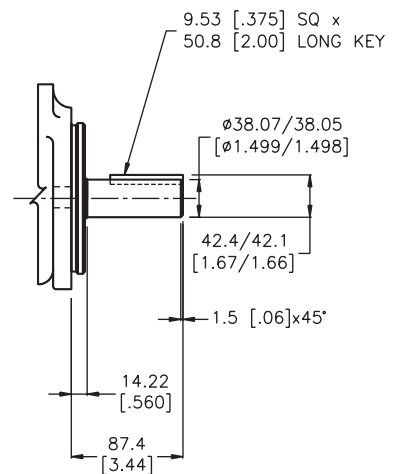
Shaft 86
Heavy Duty Keyed Shaft



Shaft 1
Keyed Shaft



Shaft 11
Splined Shaft



Shaft 86
Heavy Duty Keyed Shaft