

High Pressure Single Vane Pump

HT6GC Series (TRUCK Pump)



Features

- HT6GC Series is a fixed displacement and balanced type single vane pump. The pump is designed for higher load than HT6CM pump by having double row ball bearing with needle bearing and 2 shaft seals.
- Can be connected to PTO directly.



HT6GC - 022 - 6 R 00 - 00

1
 2
 3 4 5
 6

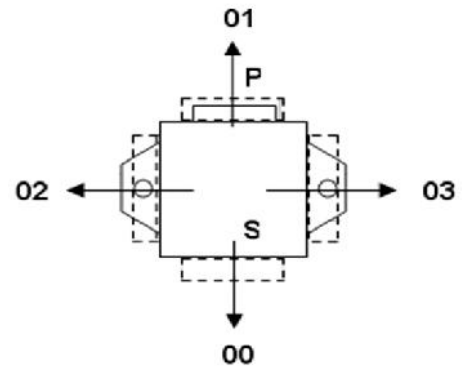
1 Model Series
HT6GC

2 Ring Size (USgpm)
HT6GC - 003, 005, 006, 008, 010, 012, 014
017, 020, 022, 025, 028, 031

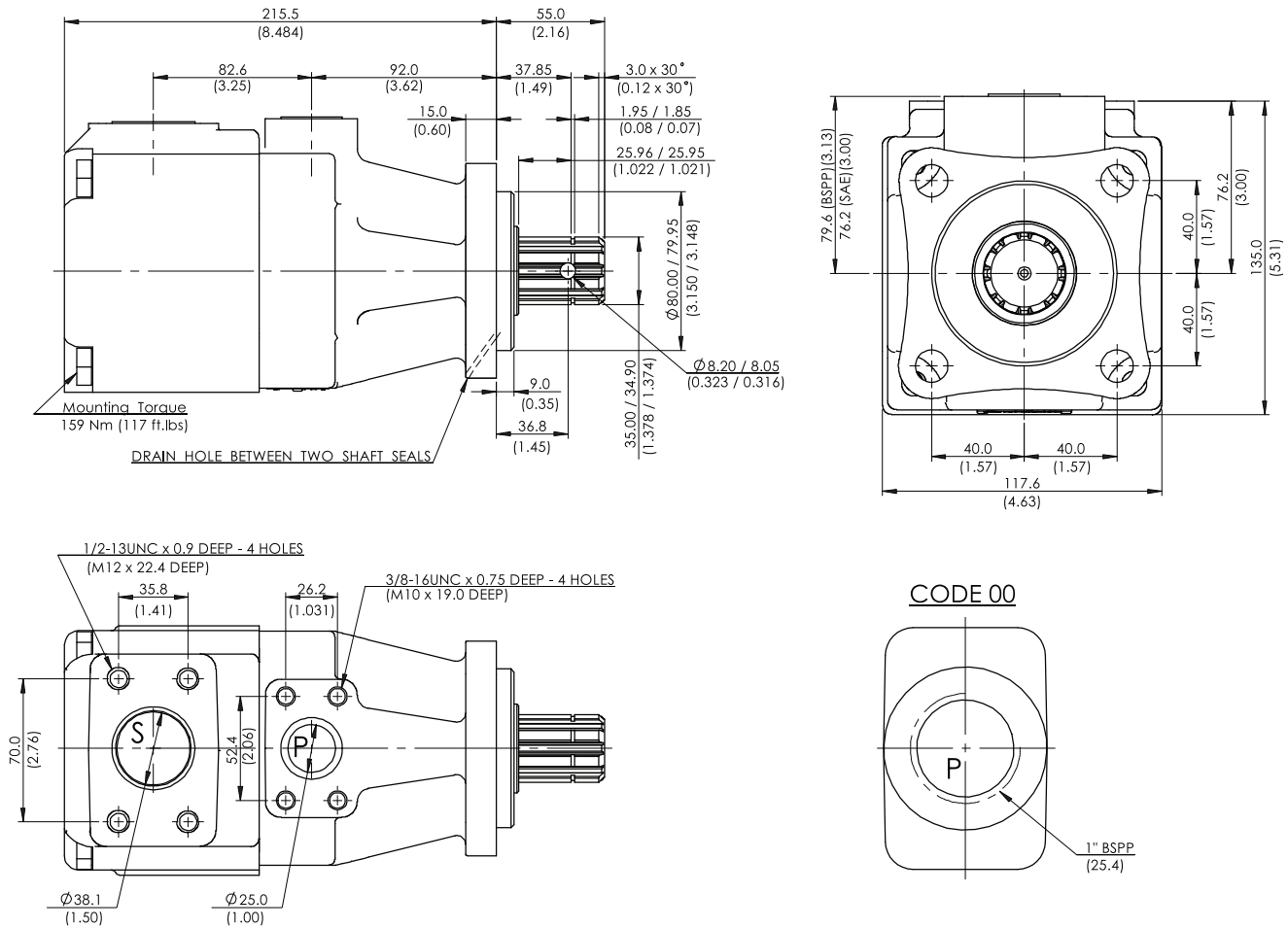
3 Shaft
6 - Splined (DIN 5462)

4 Shaft Rotation
(Viewed from shaft end)
R - Turn right
L - Turn left

5 Inlet Port position
(Viewed from cover end)
00 - Opposite Outlet
02 - 90° CCW from Outlet
01 - Inline with Outlet
03 - 90° CW from Outlet



6 Outlet Port Size
00 - Flange 1" BSPP
01 - Flange 1" SAE 4 bolts (UNC)
M1 - Flange 1" SAE 4 bolts(Metric)



Specifications

Size	Displacement cm ³ / r (in ³ / r)	Max Speed rpm	Min Speed rpm	Max Intermittent Pressure bar (psi)	Max Continuous Pressure bar (psi)	Weight kg (lb)
003	10.8 (0.66)	2800	600	280(4000)	240 (3500)	17.5 (38.5)
005	17.2 (1.05)					
006	21.3 (1.30)					
008	26.4 (1.61)					
010	34.1 (2.08)					
012	37.1(2.26)					
014	46.0 (2.81)					
017	58.3 (3.56)					
020	63.8 (3.89)	2500	600	210 (3000)	160 (2300)	
022	70.3 (4.29)					
025	79.3 (4.84)					
028	88.8 (5.42)					
031	100.0 (6.10)					

* Performance Characteristics same as HT6C *