

# Cartridge Kit for Vane Motor

## 25HM, 35HM and 45HM



### Features

Replacement parts for High Torque Vane Motors (25HM, 35HM and 45HM series)

With the cartridge independent of the shaft, allowing for easy change of flow capacity and field servicing without removing the motor from its mounting.

High speed and high-pressure motors ranging from 43.9 to 193.2 cm<sup>3</sup> / r with 172 bar of maximum pressure and 9 torques rating choices. The internal inlet chambers are equally and diametrically opposed resulting in balanced in radial loads. Thus, the motors are hydraulically balanced which reduced wear and heat from friction.

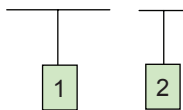
These motors provide 90% efficiency due to dual pressure plates, which produced low internal leakage. Motors are bi-rotational, simply reversed by reversing in flow direction.



### Ordering Code and Specifications

### Cartridge Kit for Vane Motor

#### 25HM - 65

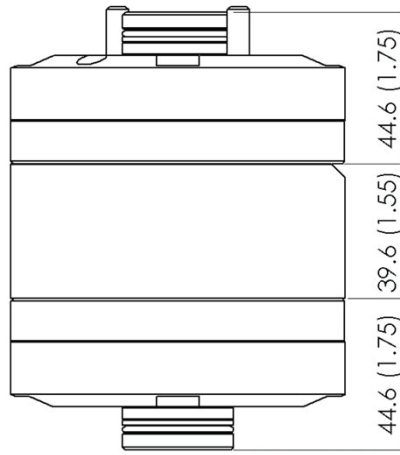


**1** Model  
25HM, 35HM, 45HM

**2** Ring size - Nominal torque rating (lb in/100psi)  
25HM - 30, 42, 55, 65  
35HM - 80, 95, 115  
45HM - 130, 155, 185

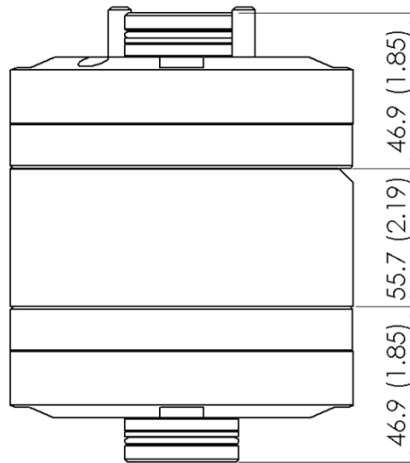
Specifications				Vane Motor HM Series	
Model Series	Torque Nm/6, 9bar (lb in/100 psi)	Displacement cm <sup>3</sup> /r (in <sup>3</sup> /r)	Flow input/ required @ 1200 r/min L/min (USgpm)	Maximum speeds & pressures	Approx Weight kg (lb)
25HM	3.3 (30)	29.0 (1.77)	34.8 (9.19)	3600 r/min @ 34 bar (500 psi) 4000 r/min @ 34 bar (500 psi)	4.8 (10.5)
	4.7 (42)	43.9 (2.68)	52.6 (13.9)		
	6.2 (55)	57.7 (3.52)	69.3 (18.3)		
	7.3 (65)	68.7 (4.19)	82.5 (21.8)		
35HM	9.0 (80)	83.6 (5.10)	100.3 (26.5)		7.4 (16.2)
	10.7 (95)	100.3 (6.12)	120.4 (31.8)		
	13.0 (115)	121.9 (7.44)	146.1 (38.6)		
45HM	14.7 (130)	138.0 (8.42)	165.4 (43.7)	2400 r/min @ 155 bar (2250 psi) 3000 r/min @ 172 bar (2500 psi)	11.8 (26)
	17.5 (155)	163.2 (9.96)	195.7 (51.7)		
	20.9 (185)	193.2 (11.79)	232.0 (61.3)		

**Cartridge Kit 25HM Installation Dimensions mm(inch)**



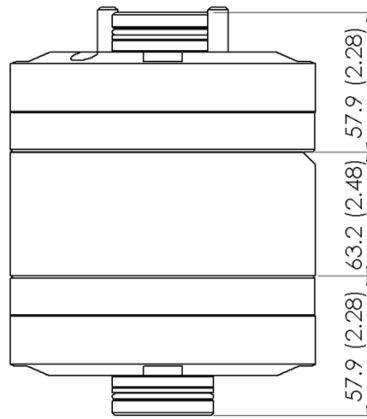
Model Series	Torque Nm/6,9 bar (lb in / 100psi)	Displacement cm <sup>3</sup> /r (in <sup>3</sup> /r)	Flow input/ required @ 1200 r/min L/min (Usgpm)	Maximam Speed & Pressure	Approx Weight kg (lb)
25HM	3.3 (30)	29.0 (1.77)	34.8 (9.19)	3600 r/min @ 34 bar (500 psi) 4000 r/min @ 34 bar (500 psi)	4.8 (10.5)
	4.7 (42)	43.9 (2.68)	52.6 (13.9)		4.8 (10.5)
	6.2 (55)	57.7 (3.52)	69.3 (18.3)		4.8 (10.5)
	7.3 (65)	68.7 (4.19)	82.5 (21.8)		4.8 (10.5)

**Cartridge Kit 35HM Installation Dimensions mm(inch)**



Model Series	Torque Nm/6,9 bar (lb in / 100psi)	Displacement cm <sup>3</sup> /r (in <sup>3</sup> /r)	Flow input/ required @ 1200 r/min L/min (Usgpm)	Maximam Speed & Pressure	Approx Weight kg (lb)
35HM	9.0 (80)	83.6 (5.10)	100.3 (26.5)	3600 r/min @ 34 bar (500 psi) 4000 r/min @ 34 bar (500 psi)	7.4 (16.3)
	10.7 (95)	100.3 (6.12)	120.4 (31.8)		7.4 (16.3)
	13.0 (115)	121.9 (7.44)	146.1 (38.6)		7.4 (16.3)

**Cartridge Kit 45HM Installation Dimensions mm(inch)**



Model Series	Torque Nm/6,9 bar (lb in / 100psi)	Displacement cm <sup>3</sup> /r (in <sup>3</sup> /r)	Flow input/ required @ 1200 r/min L/min (Usgpm)	Maximam Speed & Pressure	Approx Weight kg (lb)
45HM	14.7 (130)	138.0 (8.42)	165.4 (43.7)	2400 r/min @ 155 bar (2250 psi) 3000 r/min @ 172 bar (2500 psi)	11.8 (26.0)
	17.5 (155)	163.2 (9.96)	195.7 (51.7)		11.8 (26.0)
	20.9 (185)	193.2 (11.79)	232.0 (61.3)		11.8 (26.0)