

High Torque Vane Motor

HM2-210 Series

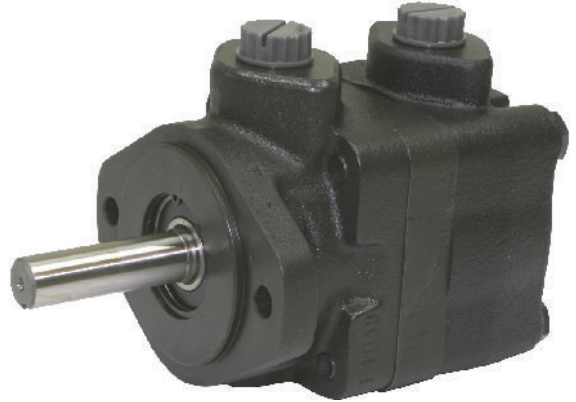


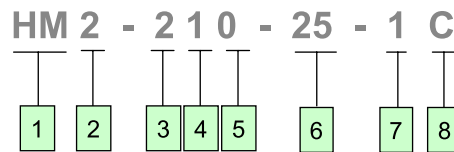
Features

HM2 spring loaded vane motors suitable for industrial and mobile applications. The wide range of speeds and pressure make them ideal for most motor applications.

Motors are constructed with spring loaded vanes offering smooth operation over a wide speed range.

Motors can be reversed or stalled underload without damage to the unit when proper relief protection is applied. A full size unrestricted drain line must be connected directly from case drain to reservoir return located below the lowest fluid level in the system.





1 Vane Type Motor
HM

2 Series (bi-directional rotation)
2

3 Series frame size
2 - Small

4 Porting Connection
1 - 3/4" NPT both ports
2 - 1 5/16" - 12 UN both ports

5 Mounting
0 - 2-bolt flange

6 Ring size-Nominal torque Rating
25 - 25 lb. in. Per 100 psi
35 - 35 lb. in. Per 100 psi

7 Shaft
1 - Straight keyed
3 - Woodruff keyed
6 - Straight stub
11 - Splined

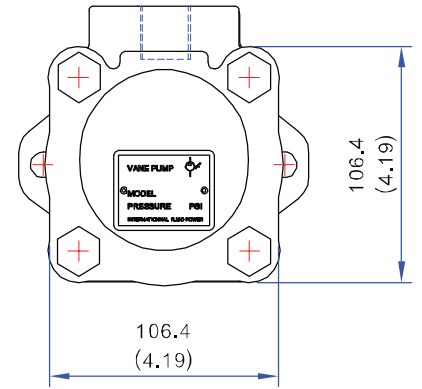
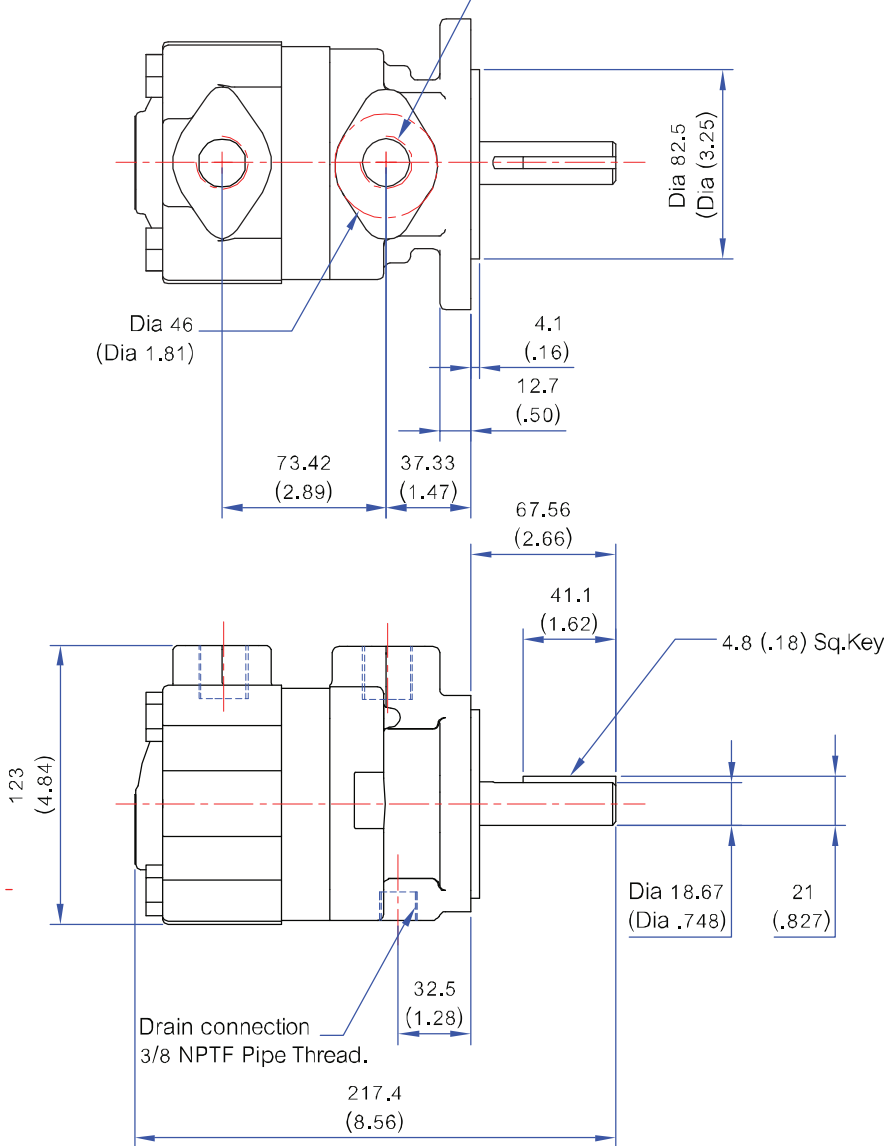
8 Cover Port positions
(Viewed from cover end)
A - Opposite body port
B - 90° CCW body port
C - Inline with body port
D - 90° CW from body port

Specifications

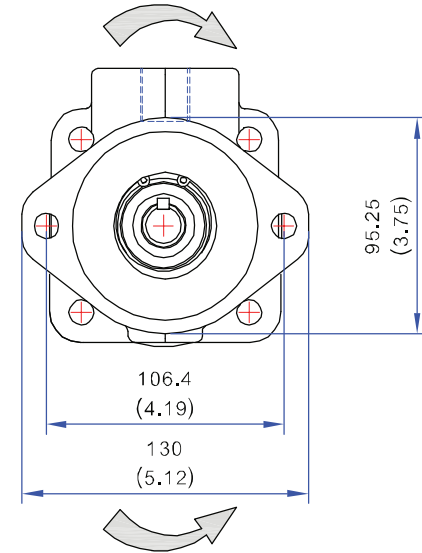
Model Series	Torque Nm/6, 9 bar (lb in/100 psi)	Displacement ³ cm ³ /r (in ³ /r)	Maximum speeds & Pressure	Approx Weight kg (lb)
HM2-210 & HM2-220	2.0 (25)	24.7 (1.51)	2200 r/min @ 138 bar (2000 psi)	9.5 (21)
	4.0 (35)	35.4 (2.16)	1800 r/min @ 121 bar (1750 psi)	

HM2-210

Inlet and Outlet Port
Connection 3/4 NPTF Pipe Thread.

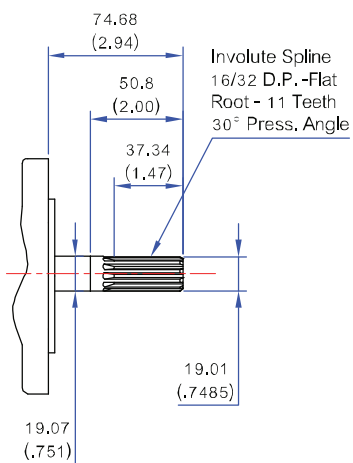


Clock wise Rotation



Counter Clock wise Rotation

Splined (No.11)



Weight : 8,9 Kg (19,58 lb)

Based on temperature 49°C (120°F), viscosity 32 cSt (150 SUS)

SIZE

SIZE